



1.

1. Glastonbury House on Rosmead Ave, owned by Mr. Jeffreys. Third Ave was previously known as Glastonbury Ave as it ran past this homestead. (c. early 20th Century: **AG 3388 Cape Archives**)



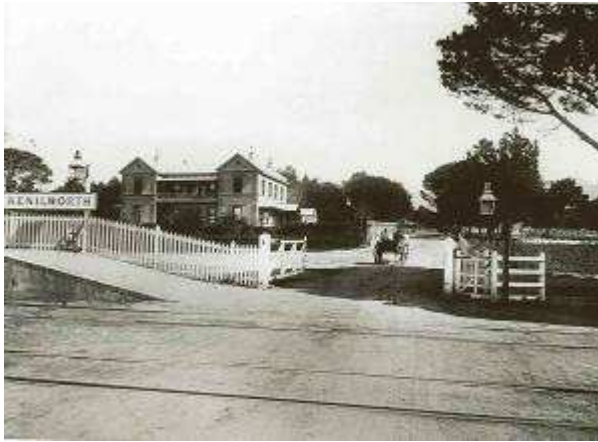
2.

2. View of Devil's Peak across the 'flats' from Lansdowne Road (c. early 20th Century: **E 5842 Cape Archives**)



3.

3. Claremont railway station (c. early 20th Century: **R 1424 Cape Archives**)



4.

4. The railway crossing at Kenilworth Station, now Kenilworth Road. (c. early 20th Century: **J 9763 Cape Archives**)